

# Rectangle Chandelier

By **My Love 2 Create**

Difficulty

Moderate

Create an elegant and modern look with this simple to build rectangle chandelier. Unique linen inset shades add a softening effect while providing plenty of light and warmth. This beautiful accent lighting will brighten and add character to any space in your home.





# Tools

## Kreg Tools



[Kreg® Pocket-Hole Jig 720](#)

## Other Tools

Miter Saw

Drill (cordless)

Impact Driver

Stapler

# Materials

## Wood Products

- 3 Board , 1x2 , 96"
- 3 Board , 2x2 , 96"
- 1 Board , 1x4 , 36"

## Hardware & Supplies

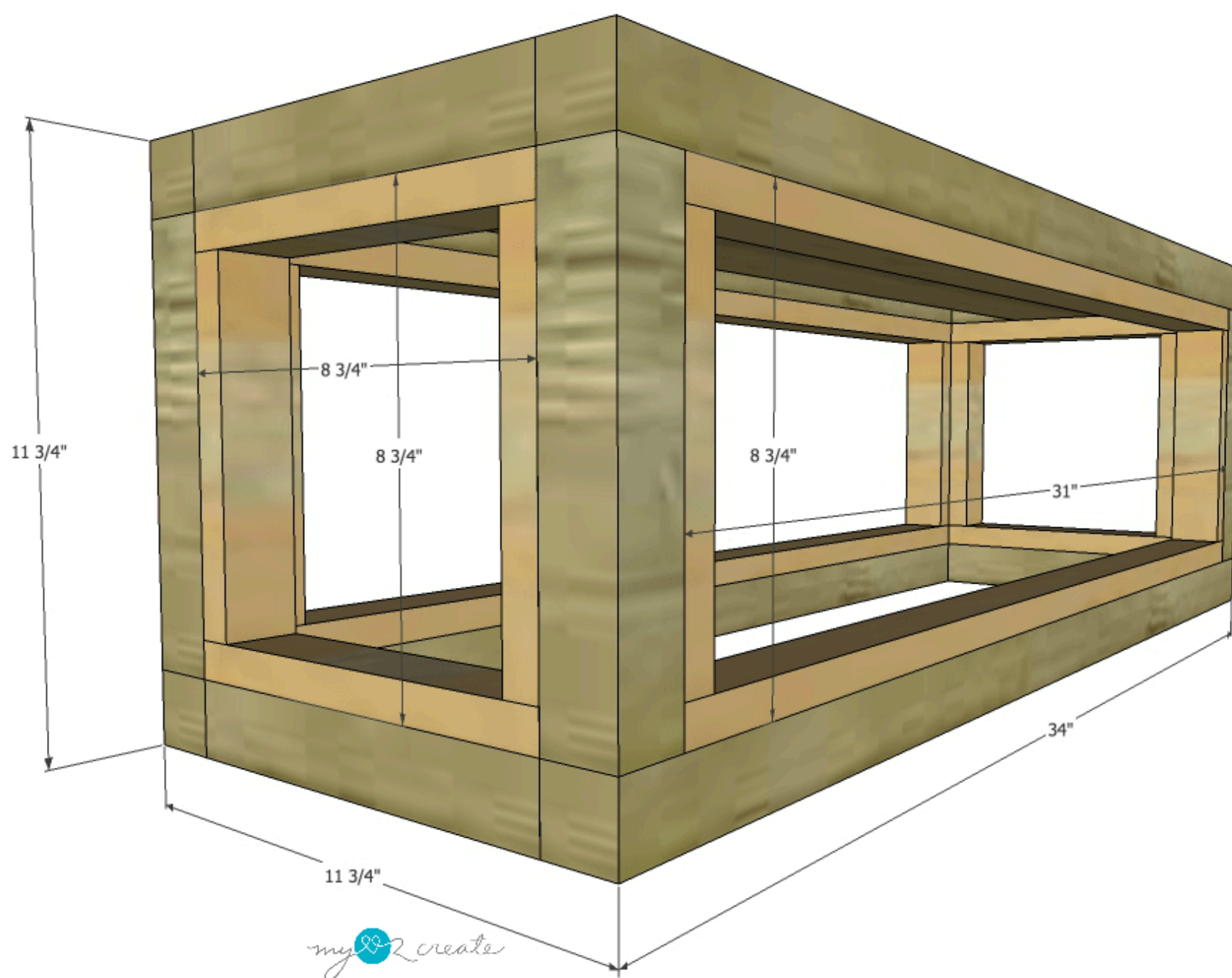
- 64 2 1/2" Pocket Hole Screws
- 64 1 1/4" Pocket Hole Screws
- 1 Hanging Light Fixture And Supplies To Hang And Wire
- 1 1 Yard Of Linen Fabric
- 1 Fabric Scissors
- 100 3/8" Staples



# Cut List & Parts

- 4 Stiles, 1 1/2" X 1 1/2" X 34"
- 8 Rails, 1 1/2" X 1 1/2" X 8 3/4"
- 4 Stiles, 3/4" X 1 1/2" X 31"
- 8 Rails, 3/4" X 1 1/2" X 7 1/4"
- 4 Rails, 3/4" X 1 1/2" X 8 3/4"



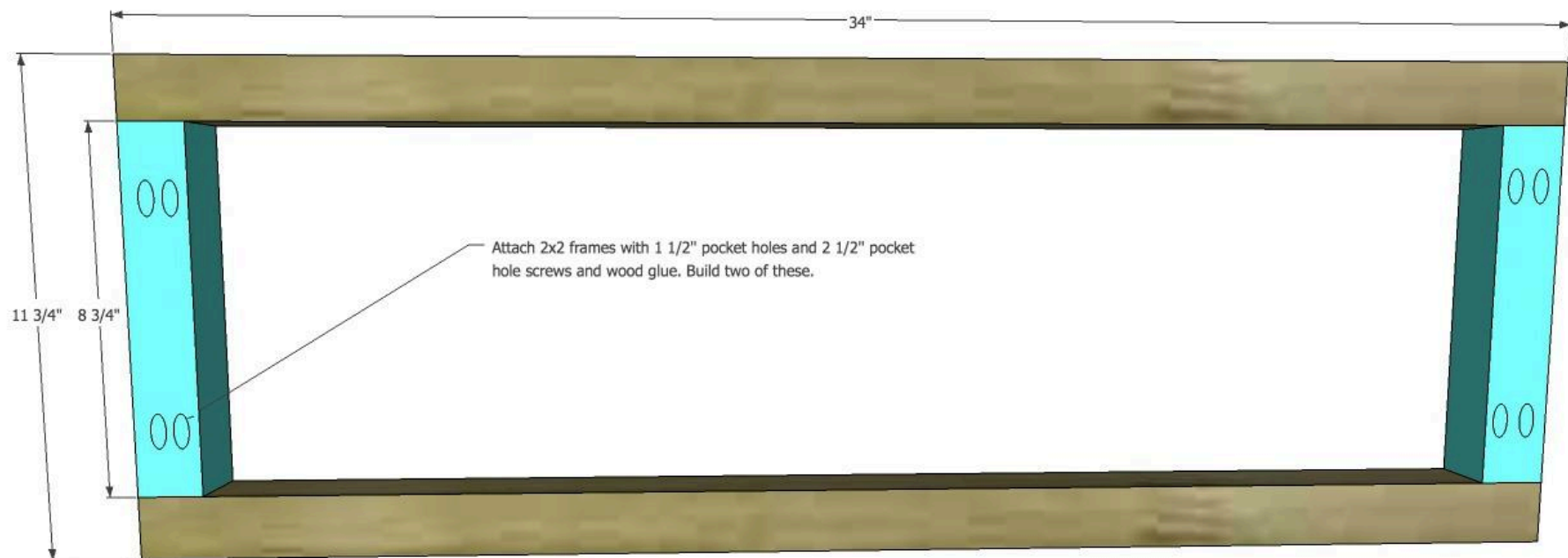


# Directions

1

## Build 2x2 frames

Build the long 2x2 frames for the light fixture with 1 1/2" pocket holes and 2 1/2" pocket hole screws and wood glue.



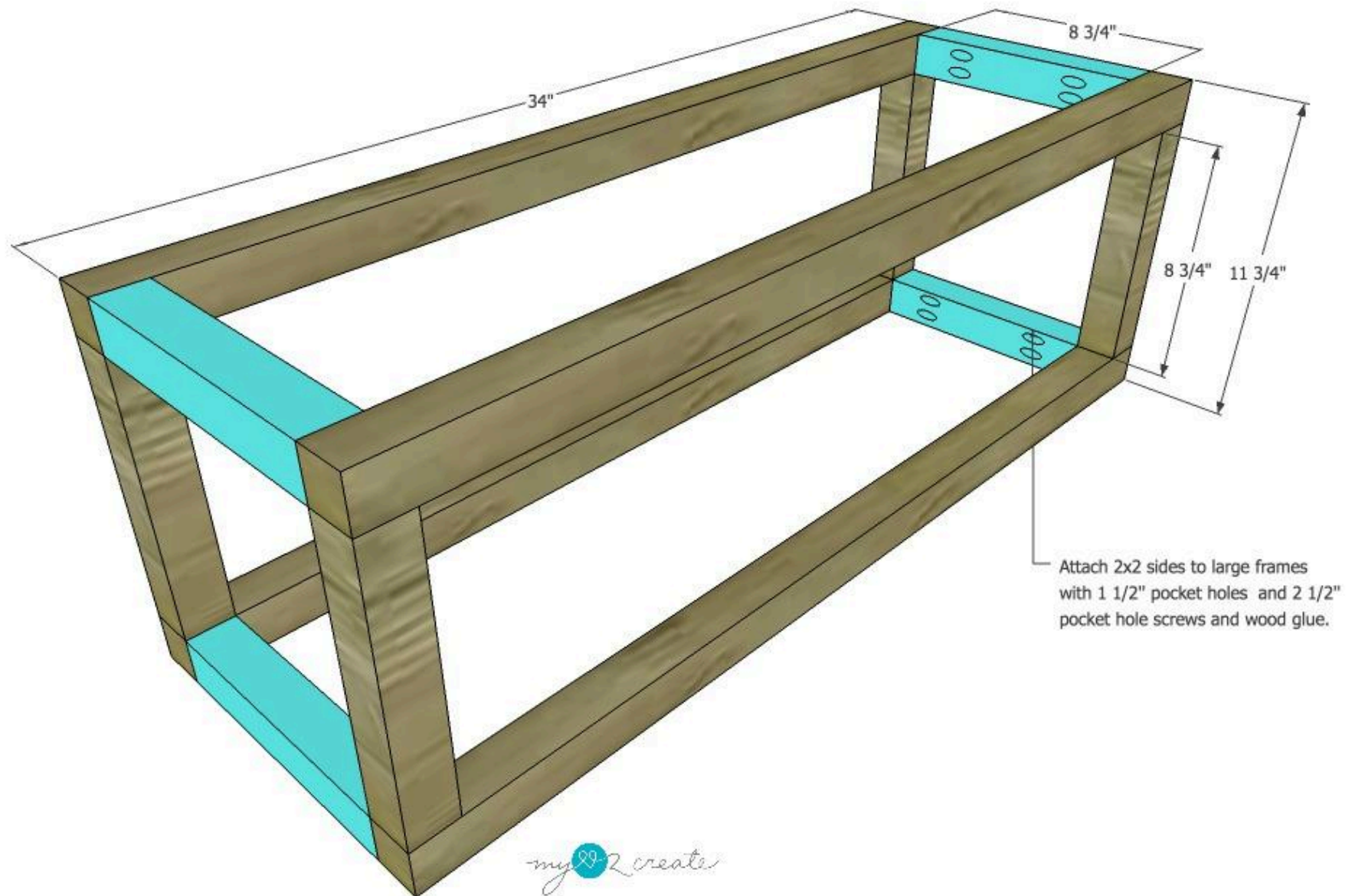
my create



2

## Attach 2x2 frames with side rails

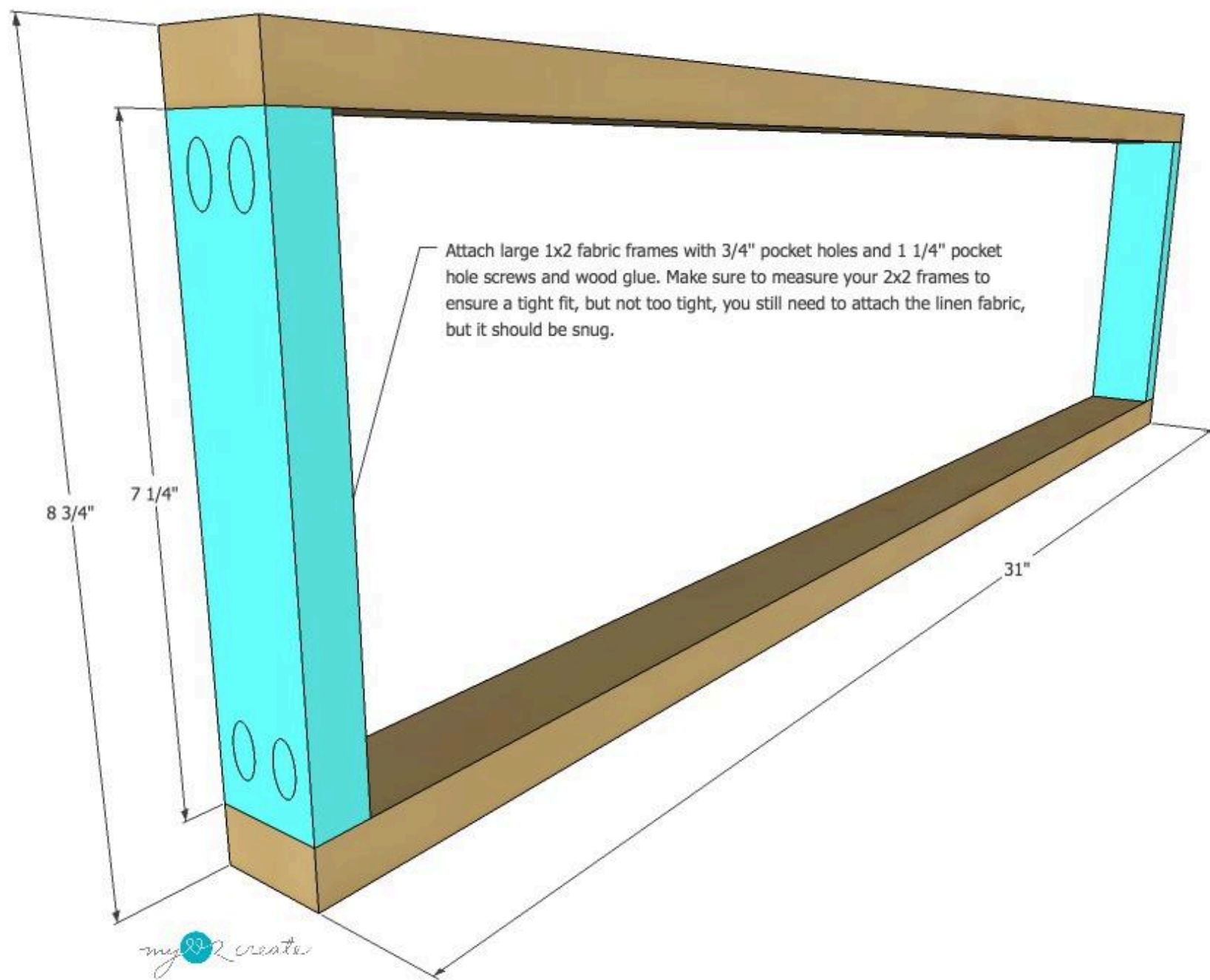
Complete the 2x2 light fixture box by attaching the two frames together with the side rails. Attach on the inside with 1 1/2" pocket holes and 2 1/2" pocket hole screws and wood glue. You can also omit the pocket holes on this step and glue and nail them in from the sides with 2" finish nails. Either option will work, I ended up doing this on my build because I was out of 2 1/2" pocket hole screws and in a remote location.



## 3

**Build large fabric frames**

Build the two large linen fabric frames as shown with 1x2's. Attach with 3/4" pocket holes and 1 1/4" pocket hole screws on the outside.

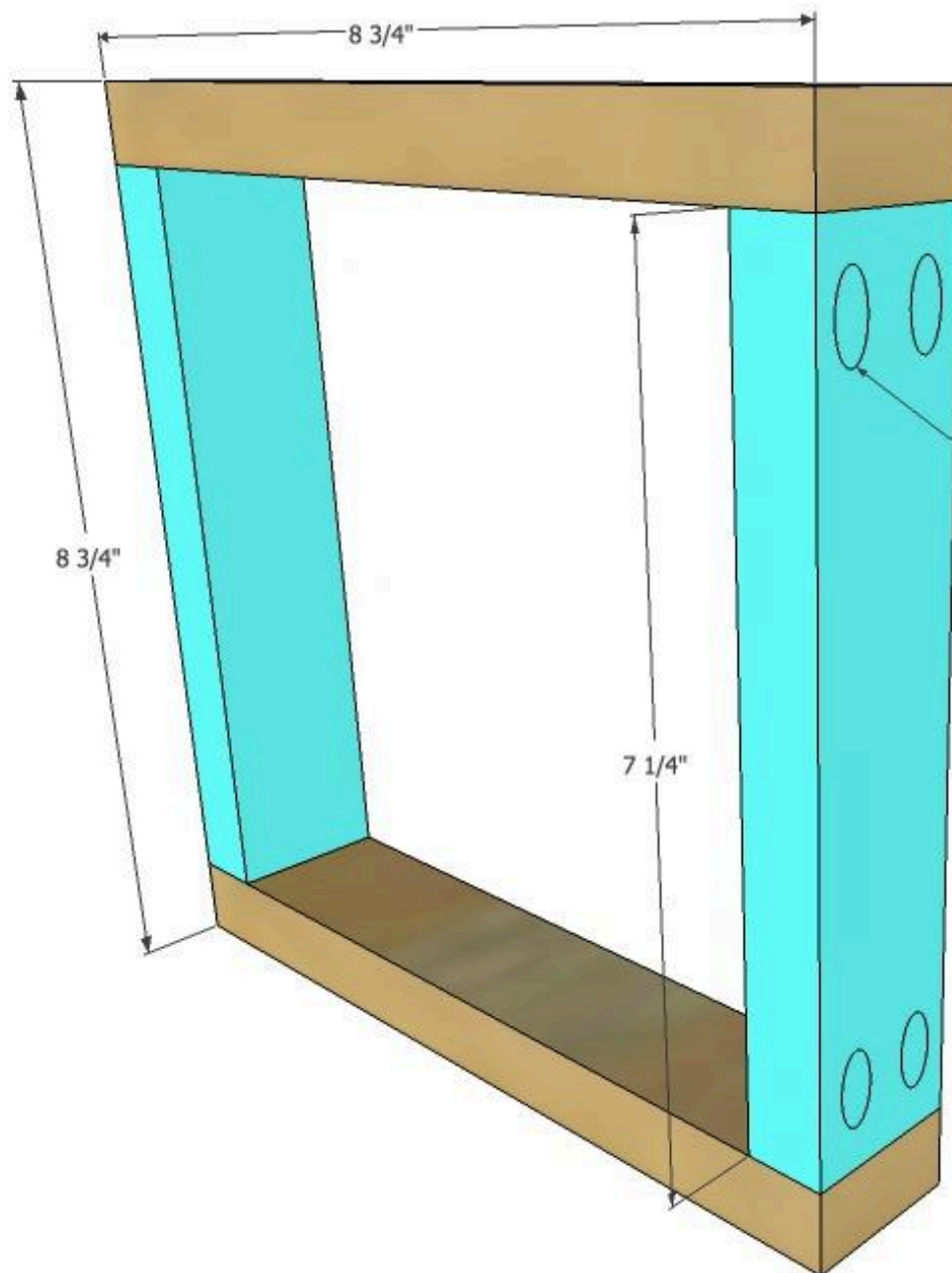




# 4

## Build small fabric frames

Build two small fabric frames as shown using 1x2 boards. Attach with 3/4" pocket holes and 1 1/4" pocket hole screws on the outside.



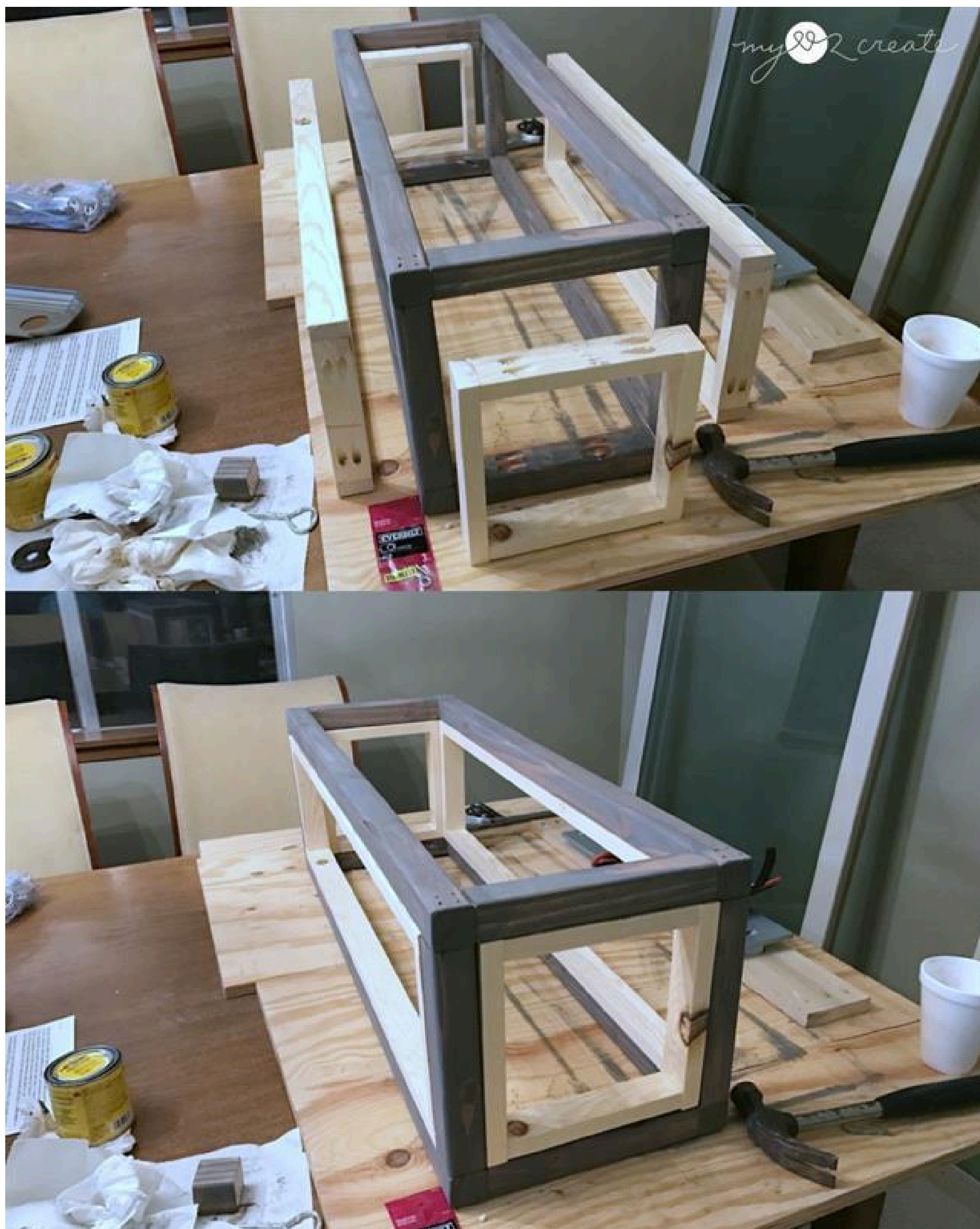
Attach small 1x2 fabric frames with 3/4" pocket holes and 1 1/4" pocket hole screws and wood glue. Make sure to measure your 2x2 frames to ensure a tight fit, but not too tight, you still need to attach the linen fabric, but it should be snug.

*my create*

5

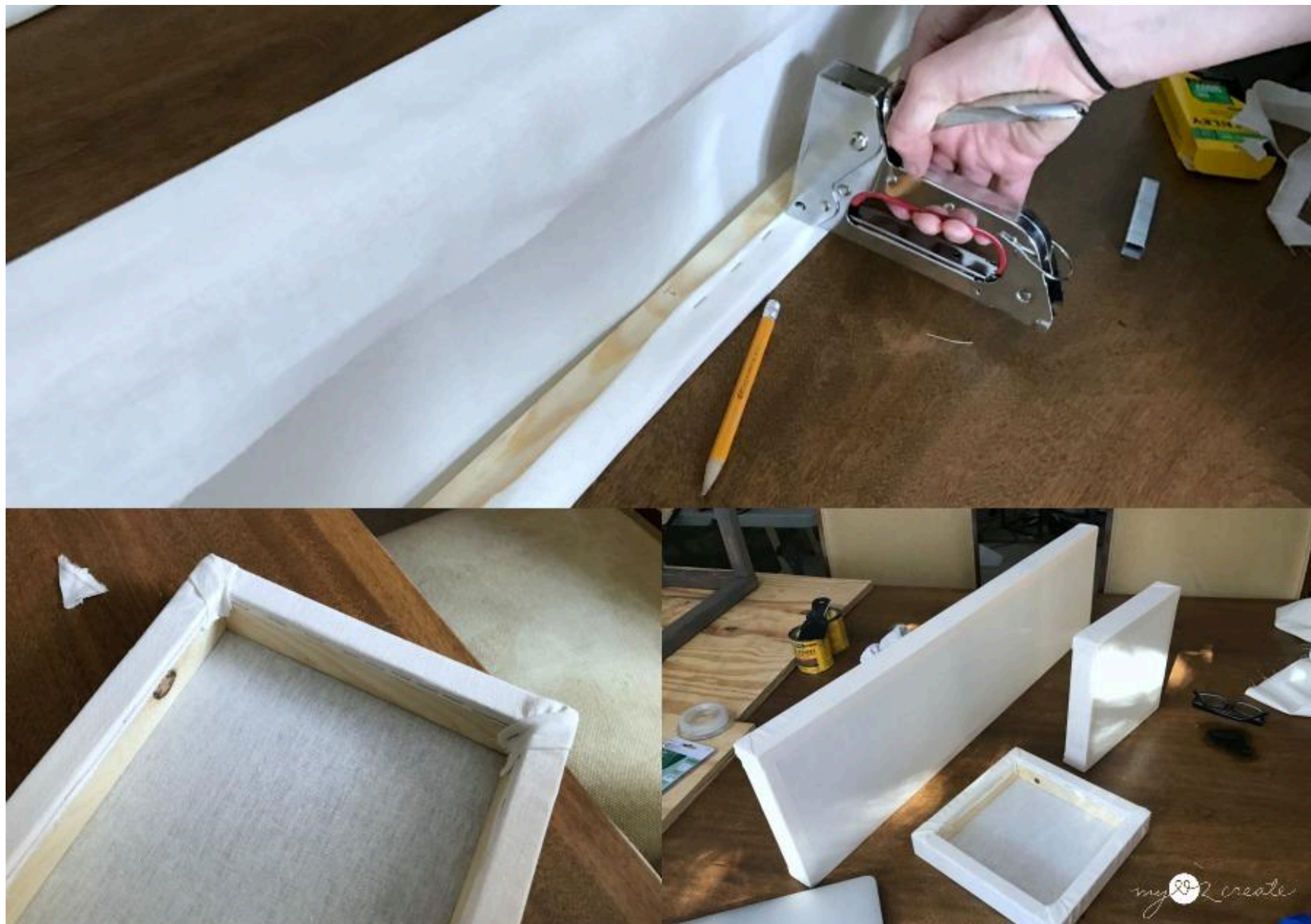
**Stain or Paint light fixture box**

Sand and fill any holes that may show. Stain or Paint light fixture box to desired finish. Also dry fit the linen fabric frames to ensure they are the correct size before applying the linen. I made this light fixture for my sister's dining room and she choose Minwax classic gray stain.



**6****Attach linen to fabric frames**

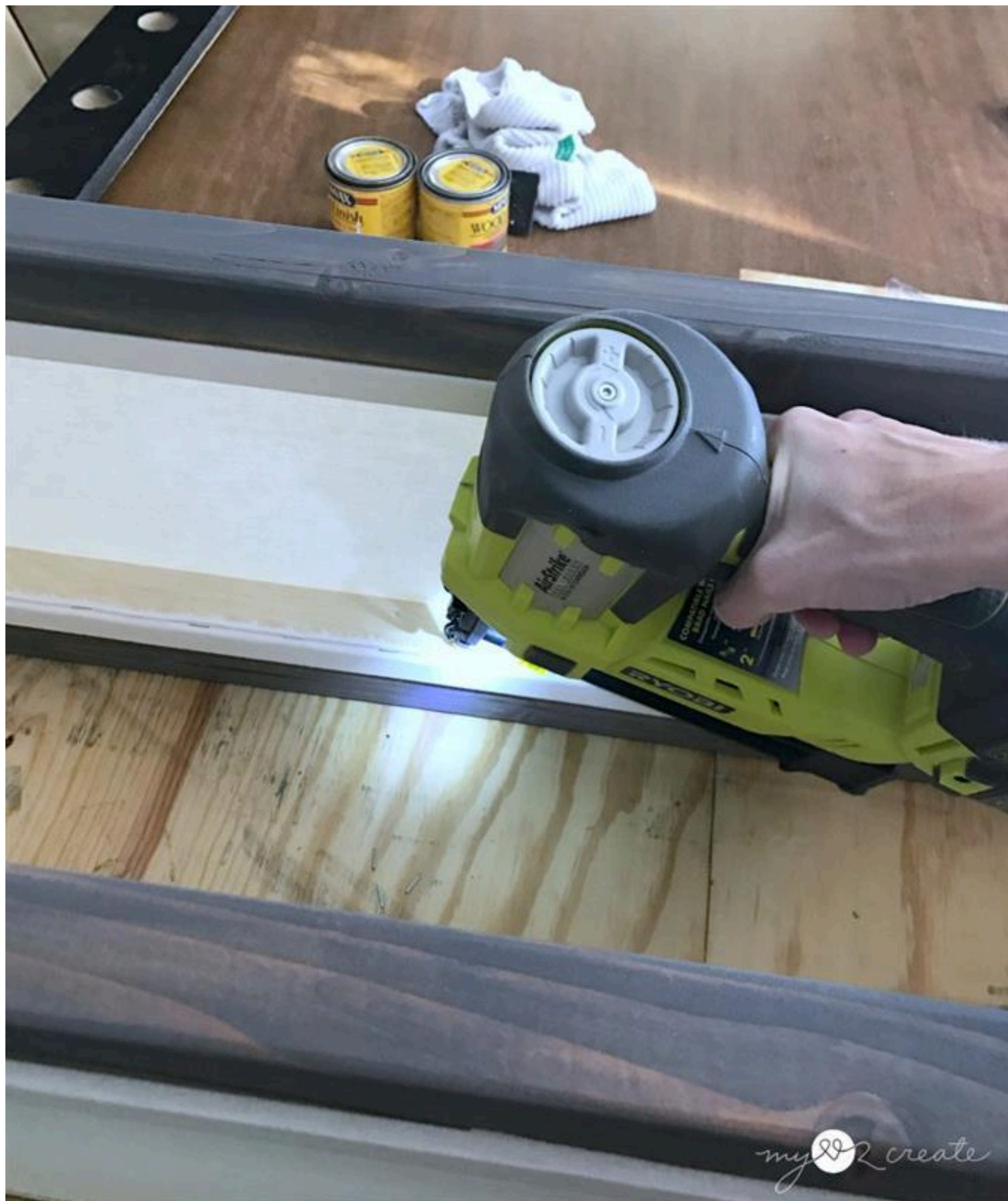
Lay out your 1 yard of linen fabric, be sure to press before you use it. Place the four frames on the fabric. Cut fabric 2 1/2" to 3" bigger on each side of each frame. Stretch and fold ends over and staple to inside of 1x2 frames. Start on the long side and work your way around stretching snug, but not too tight. Leave the corners for last. Cut excess fabric on corners and fold and staple inside the frame.





**7****Add linen frames to box**

Fit the fabric frames into the light fixture box one at a time. Make sure to push them in from the inside of the box frame. Once installed, staple or screw them to the 2x2 frame from the inside. Note: My 1x2's were slightly wider than my 2x2's, and so I set my linen frames 1/4" outside of the 2x2 frame. If your 1x2's and 2x2's are both 1 1/2" like the normally are, then you will not have to do this.



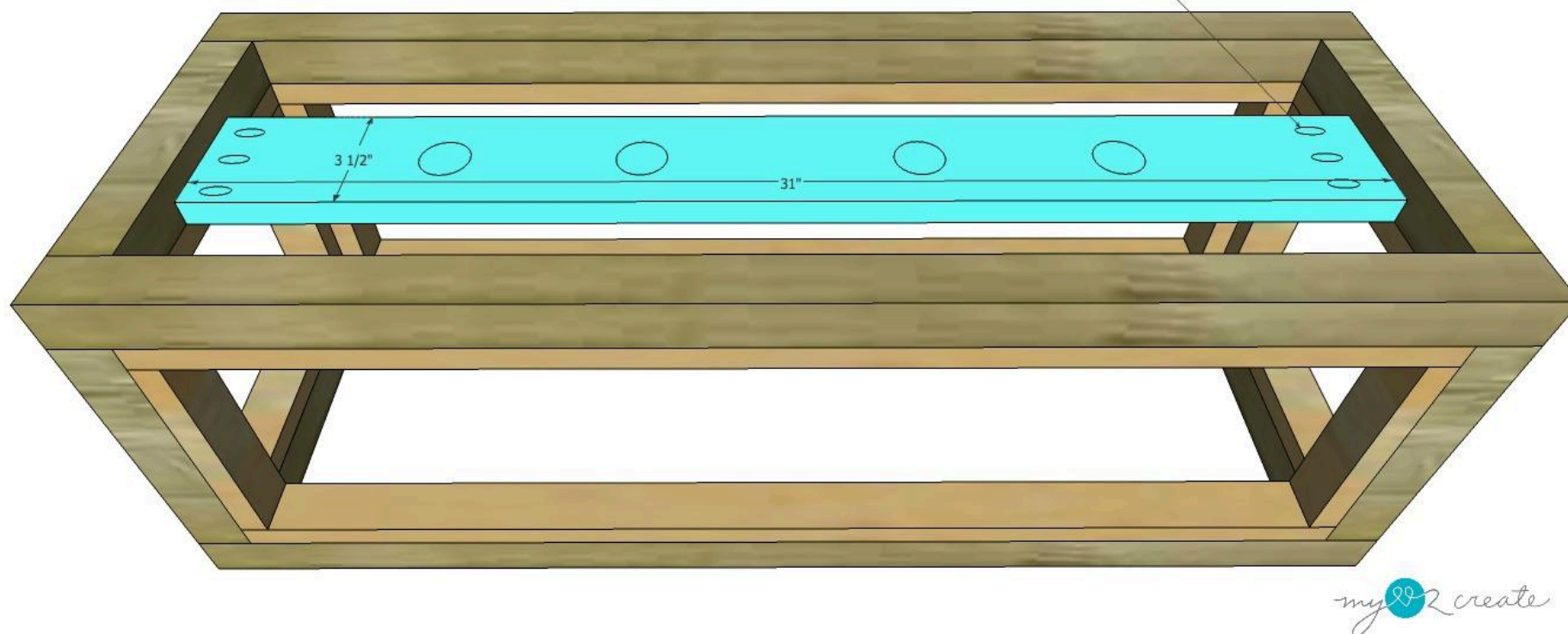


## 8

**Attach light fixture support board**

Depending on which light fixture you purchase for your light you may have to adjust your board size and placement. My light fixture was repurposed from an old bathroom wall mounted light that I purchased at a thrift store for \$4. I used a 1x4 board to mount the light inside of the light fixture box, and drilled holes for my lights and 3/4" pocket holes for mounting the board in the frame.

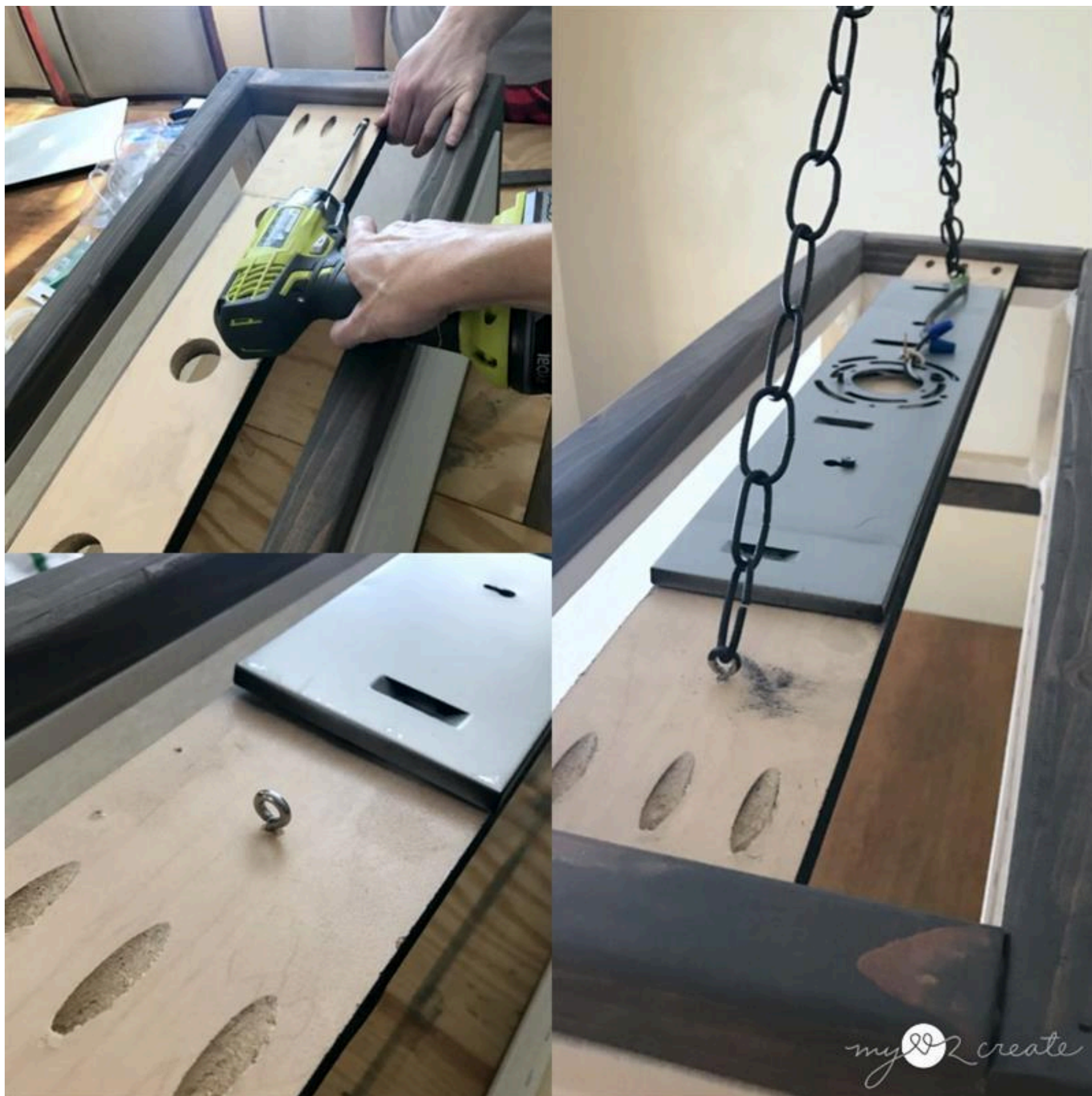
Attach 1x4 light fixture support board with 3/4" pocket holes and 1 1/4" pocket hole screws. Place it flush with the bottom of the 2x2, so you have room to mount your light fixture on top, measure and drill holes for lights to mount on board to match your light fixture.



my create

**9****Attach lighting hardware and hang**

Attach your lighting hardware and wire and hang light according to directions. I screwed my wall mount light onto my 1x4 support board, and wired it to a new cord to go up to the ceiling and wired it there. For the top hardware I used the old chandelier pieces, and added screw eyes to my 1x4 support board and attached chains for hanging. If you purchase your own lighting kit or hardware follow the instructions included. I choose to repurpose my lighting supplies.

**10****Visit [www.MyLove2Create.com](http://www.MyLove2Create.com)**

For a picture tutorial and more details on this build!